

Proposition 1 Integrated Regional Water Management (IRWM) Tulare-Kern Funding Area (TKFA) Tribal Factsheet

IRWM Program Overview

The Integrated Regional Water Management (IRWM) program was established in 2002 as a statewide voluntary water planning program to encourage regional collaboration among multiple local agencies. The program is managed by the Department of Water Resources (DWR) and offers grant funding to IRWM groups for water-related projects. These projects can include those that support regional water management planning and implementation, increase of water supply and reliability, or protection or improvements to water quality.

Why Is This Important?

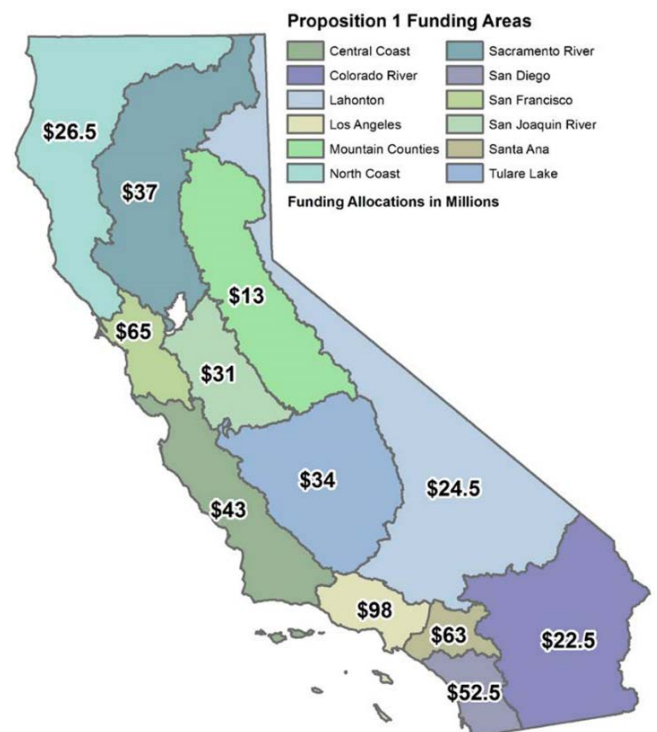
IRWM creates a unique opportunity for local and regional agencies, as well as Tribes, to come together to implement new and effective water management efforts. Tribes that are proactively planning and investing in water management strategies have shown resilience and are able to minimize future vulnerabilities. Tribes should participate to:

- **Identify Water-Related Challenges and Needs:** Tribes can share important information about their water needs and insight to help set goals and priorities for the region, which can lead to better water management decisions and projects on their lands or ancestral lands.
- **Obtain funding:** Tribes may submit projects through the IRWM program to obtain funding to address current critical water needs, promote water conservation, improve water quality, and/or build resiliency. Tribes may also have the opportunity to review and rank projects proposed by other water users (referred to as stakeholders).
- **Improve Water Supply & Sustainability:** Management of the groundwater is critical to protecting the local water supply and preparing for future droughts. Tribes who are involved in the IRWM program, may provide feedback on actions and projects that may benefit their region, while also sustaining and strengthening the IRWM goals.

Available Grant Funds

Over \$1.5 billion in voter-approved State bonds have been provided to the Integrated Regional Water Management Program since it began in 2002. The most recent voter approved bond, Proposition 1 (Prop 1), provided \$510 million for DWR to award IRWM grants to 12 Funding Areas in California.

At least 10% of the funds (\$51 million) will be reserved for projects **that directly benefit Disadvantaged Communities (DACs), including Tribes**, with the minimum 10% requirement applied to each Funding Area. Each Funding Area will then have funds available through two (2) funding categories: 1) General Implementation Projects and 2) DAC Implementation Projects. Tribes and disadvantaged communities can request funds from either category.



Available Funds in the TKFA

DWR will release Prop 1 funding in two solicitation rounds. The first solicitation round occurred in 2019 and the second round is forthcoming. Each round will have a limited amount of funding available. Round 1 was released in 2019, where the TKFA had \$11.5 million available for general implementation projects and \$1.2 million available for DAC Round 1 implementation projects. All projects (DAC and Non-DAC) that applied for funding in Round 1 were presented to DWR during a pre-application workshop on April 24, 2019. Final funding awards for Round 1 for the TKFA can be found here: https://bit.ly/TKFA_Round1

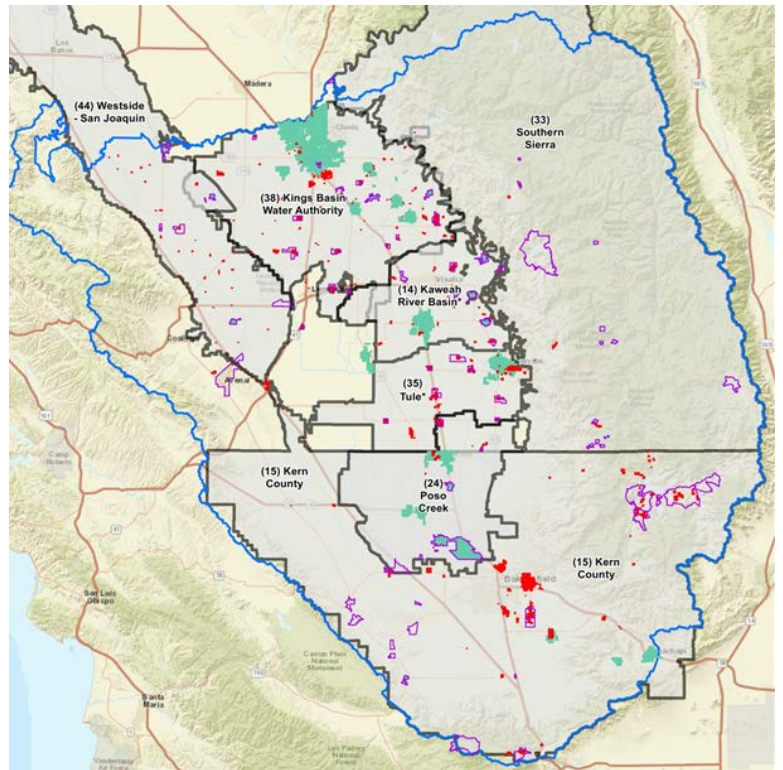
Round 2 is expected to be announced near the end of 2020 or beginning of 2021. The TKFA will have the remaining funds of \$11.5 million available for general implementation projects available and \$2.2 million available for DAC implementation projects.

Tulare-Kern Funding Area

The Tulare-Kern Funding Area encompasses most of Fresno, Kern, Kings and Tulare Counties. There are seven IRWM groups within the Tulare-Kern Funding Area that have chosen to participate in the DACI Program.

The seven (7) IRWM Groups are:

- Kaweah River Basin IRWM Agency
- Kern County IRWM Agency
- Kings Basin Water Authority
- Poso Creek IRWM Agency
- Southern Sierra IRWM Agency
- Tule River Basin IRWM Agency
- Westside-San Joaquin IRWM Agency



How are Tribes identified in IRWM?

The IRWM Grant Program identifies federally recognized Indian Tribes and State Indian Tribes listed on the Native American Heritage Commission's Tribal Consultation list, as eligible grant applicants who may access IRWM grant funding. Based on the 2019 IRWM Guidelines, a California Native American Tribe includes all Indigenous Communities of California that are on the contact list maintained by the Native American Heritage Commission. Tribes on this list include those that are federally non-recognized, federally recognized, and those with allotments lands, regardless of whether they own those lands. The map on page 5 displays a California Tribal Lands Map as developed and identified by DWR.

Additionally, the chart on the next page augments DWR's map and presents a comprehensive list of Tribes that were identified to be within the TKFA and includes their respective IRWM group based on the information provided by the Native American Heritage Commission. A white area refers to as an area that is not part of an IRWM group; however, they are still within the boundaries of the Funding Area. Although a Tribe is located within a white area, depending on the IRWM group, a Tribe may request to become part of an IRWM region and have the IRWM region extend their boundaries to ensure they are eligible for grant funding.

Tribes located within the TKFA

Tribe	IRWM Group
Chumash Council of Bakersfield	Kern IRWM
Kern Valley Indian Community	Kern IRWM
Kitanemuk & Yowlumne Tejon Indians	Kern IRWM
Tejon Indian Tribe	Kern IRWM
Tubatulabals of Kern Valley	Kern IRWM
Dumna Wo-Wah Tribal Government	Kings Basin Water Authority IRWM
Kings River Choinumni Farm Tribe	Kings Basin Water Authority IRWM
Traditional Choinumni Tribe	Kings Basin Water Authority IRWM
Cold Springs Rancheria	Southern Sierra IRWM
Dunlap Band of Mono Indians	Southern Sierra IRWM
Tule River Indian Tribe	Tule River Basin IRWM
Santa Rosa Rancheria Tachi Yokut Tribe	White Area (between Kings Basin Water Authority IRWM, Westside San Joaquin IRWM and Kaweah River IRWM)
North Fork Mono Tribe	White Area (between Southern Sierra IRWM and Kings Basin Water Authority IRWM)

Chart was developed with contact information obtained from the Native American Heritage Commission

Eligible Projects & Priorities

Projects can include, but are not limited to, groundwater storage, improvement of water quality, sanitary systems, water conservation, and storm water resources management.

Priority will be given to projects that advance the IRWM goals: enhance water supply and reliability, protect or improve water quality, and those that address the Human Right to Water and climate and drought preparedness.

DWR will not knowingly disclose information related to Native American cultural sites or sacred places per Government Code section 6254(r). There is no requirement to disclose any information related to Native American cultural sites or sacred places to DWR in the project application.

How to Request Funding for Projects

To be eligible to request funds, participate in the IRWM program. You can follow these steps to get started:

1. Contact your local IRWM Group
2. Understand their project submission process
3. Complete necessary forms to submit project
4. Submit and get the project on the IRWM project list
5. As funding becomes available, update your project

How to Participate in IRWM

You can also stay involved and participate in various other ways, such as:

1. Obtain more information by visiting your IRWM group's website
2. Sign up to get updates
3. Attend a public meeting
4. Join your IRWM Group

IRWM Contacts

Kaweah River Basin IRWM

Shane Smith
ssmith@kdwcd.com
(559) 747-5601x135

Poso Creek IRWM

Sam Schafer
sschafer@geiconsultants.com
(805) 729-4677

Westside San Joaquin IRWM

Scott Petersen
scott.petersen@sldmwa.org
(209) 826-9696

Kern County IRWM

Jeff Eklund
jeklund@ppeng.com
(661) 616-5900

Southern Sierra IRWM

Bobby Kamansky
southernsierrairwmp@gmail.com
(559) 287-3311

Provost & Pritchard Consulting Group

Maija Madec
mmadec@ppeng.com
(559) 326-1100

Kings Basin Water Authority IRWM

Soua Lee
slee@krwd.org
(559) 237-5567x115

Tule River Basin IRWM

David DeGroot
davidd@4creeks.com
(559) 802-3052

County of Tulare/PAC

Denise England
dengland@co.tulare.ca.us
(559) 636-5027

Available Technical Assistance

Self-Help Enterprises, a non-profit community development organization, is available to assist Tribes with requesting project development funding. Assistance is available to:

- Identify Projects and/or Project Development Needs
- Complete Project Development Application Forms
- Complete other IRWM Project Forms
- Assist DACs get Projects on an IRWM Project List

For questions or assistance, contact:

Sonia Sanchez

Senior Community Development Specialist
SoniaS@selfhelpenterprises.org or (559) 802-1689

Additional Resources

CA Office of the Tribal Advisor

info.tribalaffairs@gov.ca.gov
(916) 319-9219
www.tribalaffairs.ca.gov/

Native American Heritage Commission

nahc@nahc.ca.gov
(916) 373-3710
www.nahc.ca.gov/

DWR Office of the Tribal Policy Advisor

Anecita.Agustinez@water.ca.gov
www.water.ca.gov/About/Tribal-Policy

Integrated Regional Water Management Funding Areas | IRWM Regions | California Tribal Lands

