

Proposition 1 Integrated Regional Water Management (IRWM) Tulare-Kern Funding Area Disadvantaged Community Involvement Program

DAC Involvement Program Objectives

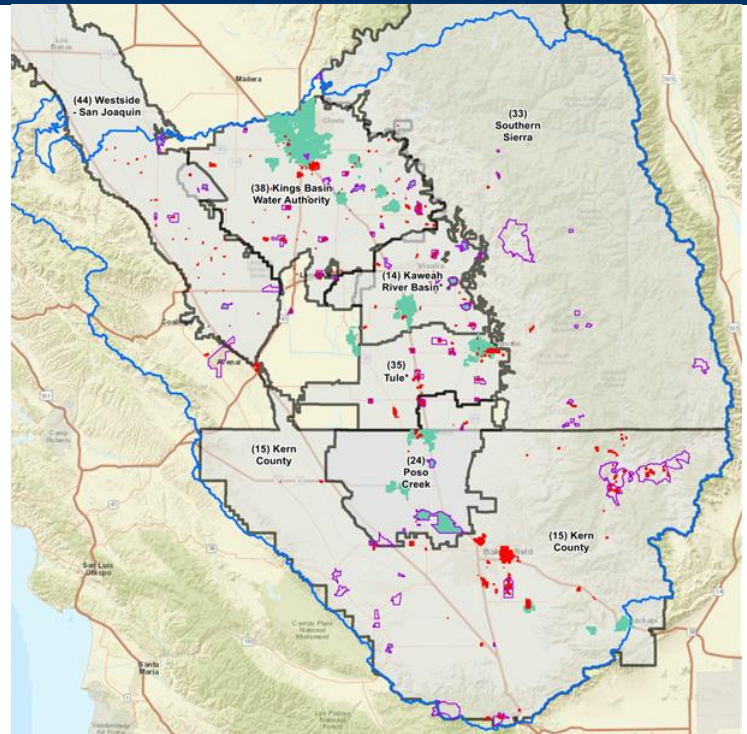
- The Tulare-Kern Funding Area (TKFA) Disadvantaged Community Involvement Program (DACIP) is a grant-funded effort aimed at improving the involvement of **Disadvantaged Communities (DACs) in Integrated Regional Water Management (IRWM) planning.**
- The Integrated Regional Water Management (IRWM) program is a statewide voluntary water planning and implementation program established in 2002 to incentivize regional collaboration among multiple local water agencies **towards the implementation of multi-benefit projects.**
- A Project Advisory Committee (PAC), comprised of a diverse group of IRWM, DAC, and Tribal representatives within the TKFA region, will oversee this program, advise the County of Tulare and support the development, implementation, and management of the DACIP process. The County of Tulare is the Grant Administrator for the TKFA.

Tulare-Kern Funding Area

The Tulare-Kern Funding Area encompasses most of Fresno, Kern, Kings and Tulare Counties. There are seven IRWM groups within the Tulare-Kern Funding Area that have chosen to participate in the DACI Program.

The seven (7) IRWM Groups are:

- Kaweah River Basin IRWM
- Kern County IRWM
- Kings Basin Water Authority IRMW
- Poso Creek IRWM
- Southern Sierra IRWM
- Tule River Basin IRWM
- Westside-San Joaquin IRWM



DACI Program Activities

The TKFA Disadvantaged Community Involvement Program will be implemented between 2018 – 2021 and will fund the following activities:

- **Needs Assessment of all Communities in the TKFA**
 - Evaluation of the community characteristics, drinking water, wastewater, storm water, and other related needs.
- **DAC Engagement and Education Program (DACEEP)**
 - Community meetings, training workshops, and educational tours/field trips
- **Project Development Assistance**
 - To help communities develop shovel-ready projects that will complete for planning or construction funding
- **Program Administration and Reporting**
 - Program Management, Grant Administration, Final Report

Disadvantaged Community Engagement and Education Program

Self-Help Enterprises, a non-profit community development organization, was chosen to develop and implement the DAC Engagement and Education Program (DACEEP). The DACEEP focuses on improving the understanding of community water needs and the IRWM Process, as well as encouraging DAC participation and engagement in IRWM activities. The program will consist of the following activities:

- Assessment of Past and Present DAC Engagement
- Community Water Needs Assessment
- Develop DAC Outreach and Engagement Recommendations
- Develop IRWM Educational Tools
- Project Development and Technical Assistance
- Build Long-term Water Management Capacity and Expertise

For questions or assistance, contact: Sonia Sanchez, Community Development Specialist at SoniaS@selfhelpenterprises.org or (559) 802-1689.

IRWM Contacts

Kaweah River Basin IRWM

Shane Smith
ssmith@kdwcd.com
(559) 747-5601x135

Kern County IRWM

Jeff Eklund
jeklund@ppeng.com
(661) 616-5900

Kings Basin Water Authority IRWM

Soua Lee
slee@krwd.org
(559) 237-5567x115

Poso Creek IRWM

Sam Schafer
sschaefer@geiconsultants.com
(805) 729-4677

Southern Sierra IRWM

Bobby Kamansky
southernsierrairwmp@gmail.com
(559) 287-3311

Tule River Basin IRWM David

DeGroot
davidd@4creeks.com
(559) 802-3052

Westside San Joaquin IRWM

Scott Petersen
scott.petersen@sldmwa.org
(209) 826-9696

Provost & Pritchard Consulting Group

Maija Madec
mmadec@ppeng.com
(559) 326-1100

County of Tulare/PAC

Denise England
dengland@co.tulare.ca.us
(559) 636-5027

Further information about the Tulare-Kern Funding Area DACI program can be found here: <http://bit.ly/TulareKernFA>