



**Self-Help
Enterprises**

ACQUISITION REHABILITATION PROGRAM *Visalia*

Self-Help Enterprises (SHE) purchases lots or existing homes in need of repairs. The acquired properties are either newly constructed or repaired and brought up to code by licensed professionals contracted through SHE. These homes are then sold at an affordable price to qualified low-income families and/or to the general public. Secondary financing may be available depending on the community in which the homes are located. SHE will compensate up to 3% commission to the buyer's agent. If you are not currently working with an agent, please contact The Gateway at 559-651-1000.

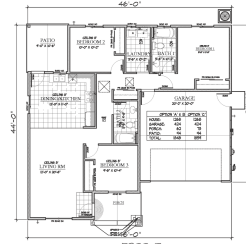
"The Gateway" offers educational and counseling services to equip you with the tools and resources needed to meet your financial and sustainable homeownership goals.

GET MORE INFO TODAY!

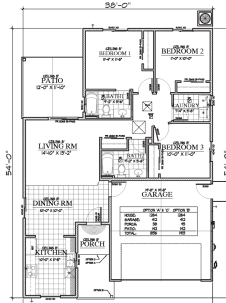
For more information about this listing or the program in general, please contact Melissa Valdez at SHE by phone at (559) 802-1621 or by email at or at melissav@selfhelpenterprises.org



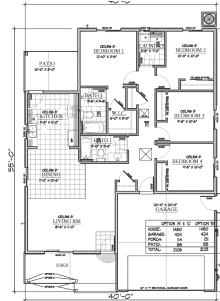
1105 N Court St. Visalia



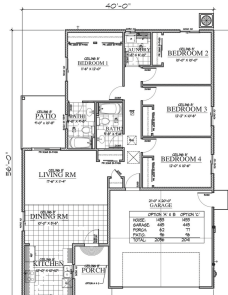
101 NW 5th Ave. Visalia



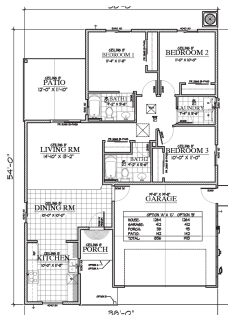
105 NW 5th Ave. Visalia



111 NW 5th Ave. Visalia



113 NW 5th Ave. Visalia



Choice is Everything

Exterior & Interior Color Selection

Get creative. Choose your countertop, cabinet, interior and exterior paint colors for a home that is uniquely yours.*

*only if offer is submitted before color selection process



Self-Help
Enterprises

8445 W. Elowin Ct. PO Box 6520 Visalia, CA 93290
Phone: 559.651.0000 Fax: 559.651.3634
www.selfhelpenterprises.org



This institution is an equal
opportunity provider,
employer, and lender.