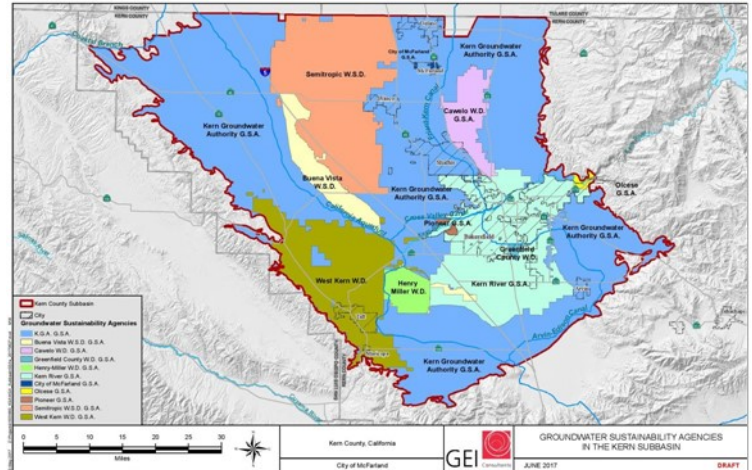


# Get to Know Your Groundwater Sustainability Agency: Kern Groundwater Authority

## OVERVIEW

The Sustainable Groundwater Management Act (SGMA) is a new law that, once fully implemented, will fundamentally change the way we use and manage groundwater in California. The Act applies to areas that rely heavily on groundwater. The Act requires local agencies to form Groundwater Sustainability Agencies (GSAs) to manage and regulate groundwater. Once formed, these GSAs will have new powers, including the ability to limit or suspend groundwater pumping and charge fees for groundwater extraction and will be responsible for ensuring that groundwater conditions improve by 2040.



To do so, GSAs will need to develop and Implement Groundwater Sustainability Plans (GSPs). GSPs will need to document the groundwater conditions in the area; establish goals to prevent negative impacts; and identify projects and management actions that improve groundwater conditions.

## YOUR GSA AT A GLANCE

<b>GSA NAME</b>	Kern Groundwater Authority Groundwater Sustainability Agency	
<b>FORMED</b>	May 30, 2017	
<b>AGENCY TYPE</b>	Joint Powers Authority (A joint powers authority is a new entity which consists of two or more public agencies jointly exercising powers, limited by the combined territorial jurisdictions of the individual agencies.)	
<b>MEMBER AGENCIES</b>	Arvin Community Services District, Arvin-Edison Water Storage District, Cawelo Water District, City of Shafter, Kern County, Kern-Tulare Water District, North Kern Water Storage District, Olcese Water District, Rosedale-Rio Bravo Water Storage District, Semitropic Water Storage District, Shafter-Wasco Irrigation District, Southern San Joaquin Municipal Utility District, Tejon-Castaic Water District, West Kern Water District, Westside District Water Authority, Wheeler Ridge- Maricopa Water Storage District	
<b>GSA BOUNDARIES</b>	Delano, Wasco, Shafter, Arvin, Lamont, Mettler, Pond, Lost Hills and Weedpatch	
<b>BOARD OF DIRECTORS</b>	Joe MacIvaine, President David Couch, Vice President Raul Barraza, Jr. Kevin Pascoe Dave Fenn Scott Hurlbert Royce Fast Andrew Pandol Bill Taube	Jason Selvidge Rick Wegis Mark Franz Jim Regan, Dennis Atkinson Gary Morris Dennis Mullins
<b>GSA MEETINGS</b>	Meetings are held on the last Wednesday of each month at 8:00 am at 1115 Truxtun Ave, Bakersfield, CA 93301, 3rd floor conference room	
<b>COMMITTEES</b>	Coordination Committee meetings held on first Monday of each month at 3:30 p.m. at the Rosedale-Rio Bravo Water Storage District, 849 Allen Road, Bakersfield, CA 93314	

## GET INVOLVED!

*Most unincorporated communities in the San Joaquin Valley are solely reliant on groundwater for drinking water. Many more residents rely on private wells. SGMA intends to bring different water users together to decide how to use and manage groundwater. As a result, decisions made by the GSAs will affect residents in rural communities.*

### **Get involved and HELP your GSA:**

- **Understand the groundwater challenges affecting rural unincorporated communities and/or private wells.**
- **Identify and develop projects that improve groundwater conditions in your community.**
- **Identify ways to keep rates affordable.**

### **Ways to Get Involved:**

- Register as an interested party for the GSA to receive notices of meetings and important information about Groundwater Sustainability Plan (GSP) development.
- Attend the GSA board and/or committee meetings. Give public comment or ask questions about their work.
- **Apply to serve on a committee.**

Together, we can make sure that drinking-water needs are well represented in this important process!

## CONTACT INFORMATION

### **Kern Groundwater Authority GSA:**

Patty Poire, (661) 479-7171, [Ppoire@kerngwa.com](mailto:Ppoire@kerngwa.com)

### **Self-Help Enterprises:**

Maria Mejia-Ng, 559-802-1655, [MariaMN@selfhelpenterprises.org](mailto:MariaMN@selfhelpenterprises.org)

Maria Herrera, (559) 802-1676, [MariaH@selfhelpenterprises.org](mailto:MariaH@selfhelpenterprises.org)

### **Department of Water Resources (DWR) Regional SGMA Coordinator:**

Matt Owens, (559) 230-3335, [Matthew.Owens@water.ca.gov](mailto:Matthew.Owens@water.ca.gov)

Factsheet developed by:





## ¡INVOLUCRARSE!

La mayoría de las comunidades no incorporadas en el Valle de San Joaquín dependen únicamente en el agua subterránea para el agua potable. Muchos residentes más utilizan pozos privados. SGMA tiene la intención de reunir a diferentes usuarios de agua para que juntos decidan cómo usar y manejar el agua subterránea. Como resultado, las decisiones tomadas por los GSA afectarán a los residentes en las comunidades rurales.

### Involúcrate y AYUDA a tu GSA a:

- Entender los desafíos del agua subterránea que afectan las comunidades no incorporadas y / o los pozos privados.
- Identificar y desarrollar proyectos que mejoren las condiciones del agua subterránea en su comunidad.
- Identificar maneras de mantener tarifas de SGMA económicas.

### Como Participar:

- Para recibir notificaciones sobre las juntas de la GSA e información importante sobre el desarrollo del GSP, registrarse como persona interesada de la GSA.
- Asista a las juntas de la Mesa Directiva y/o del comité de la GSA. Proporcione comentarios públicos o haga preguntas sobre el trabajo de la GSA.
- Solicite servir en un comité.

Juntos, podemos asegurarnos de que las necesidades de agua potable estén bien representadas en este importante proceso!

## INFORMACION DE CONTACTO

### Kern Groundwater Authority Groundwater Sustainability Agency:

Patty Poire, (661) 479-7171, Ppoire@kerngwa.com

### Self-Help Enterprises:

Maria Mejia-Ng, 559-802-1655, MariaMN@selfhelpenterprises.org

Maria Herrera, (559) 802-1676, MariaH@selfhelpenterprises.org

### Departamento de Recursos Hidricos, Coordinador Regional de SGMA:

Matt Owens, (559) 230-3335, Matthew.Owens@water.ca.gov

Hoja informativa desarrollada por:

